

Mobile checklist c: configure editing .....	3
Part 1: Configuring process framework .....	3
Step 1: Configure the enterprise process framework database for mobile.....	3
Step 2: Configure the field process framework database for mobile .....	16
Step 3: Test the field process framework database .....	20
Part 2: Configuring send/receive .....	24
Step 1: Test manual send/receive.....	24
Step 2: Configure automated send/receive via process framework replication .....	27
Checklist end .....	31

## MOBILE CHECKLIST C: CONFIGURE EDITING

**IMPORTANT:** Before beginning the Mobile editing process, complete all steps listed in *Mobile Checklist A: Preparation* and *Mobile Checklist B: Configure Replication*.

**IMPORTANT:** This document provides instructions for configuring Mobile implementations which allow editing of graphics, features, and/or CUs, namely Basic Redliner, Advanced Redliner, Inspector, Mobile ArcFM, and Mobile Designer. If implementing ArcFM Viewer View-Only, these steps are not necessary and should not be done.

### PART 1: CONFIGURING PROCESS FRAMEWORK

#### STEP 1: CONFIGURE THE ENTERPRISE PROCESS FRAMEWORK DATABASE FOR MOBILE

In this step, you will export the enterprise Process Framework database settings to XML twice: once to backup the existing settings, and once to create an external record of the new settings. Between the two exports to XML, you will add various settings required by Mobile.

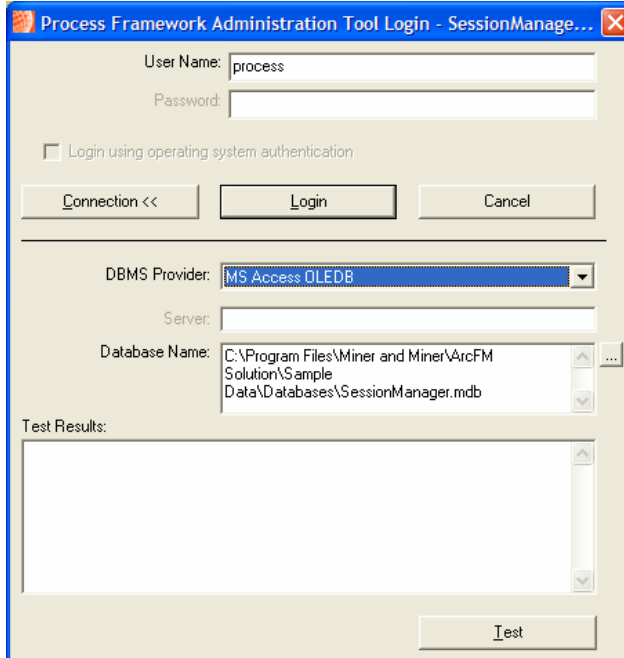
- On the **Enterprise Client**, double-click **ProcessFrameworkSampleData\_<version>.exe** to unzip it.

First, you will import enterprise workflow information necessary for supporting Mobile editing into the enterprise PX database.

- From the **Start** menu choose **Programs > ArcFM Solution > Process Framework > Administration > Process Framework Administration Tool**.
- Click [ **Connection** ] if necessary to expand the dialog.
- For **DBMS Provider** choose **MS Access OLEDB**.
- For **User Name** enter **process**
- For **Database Name**, browse to **C:\Program Files\Miner and Miner\ArcFM Solution\Sample Data\Databases\Session Manager.mdb** or if

**etc** By default, the self-extracting *ProcessFrameworkSampleData\_<version>.exe* places four *Process Framework* databases in **C:\Program Files\Miner and Miner\ArcFM Solution\Sample Data\Databases**.

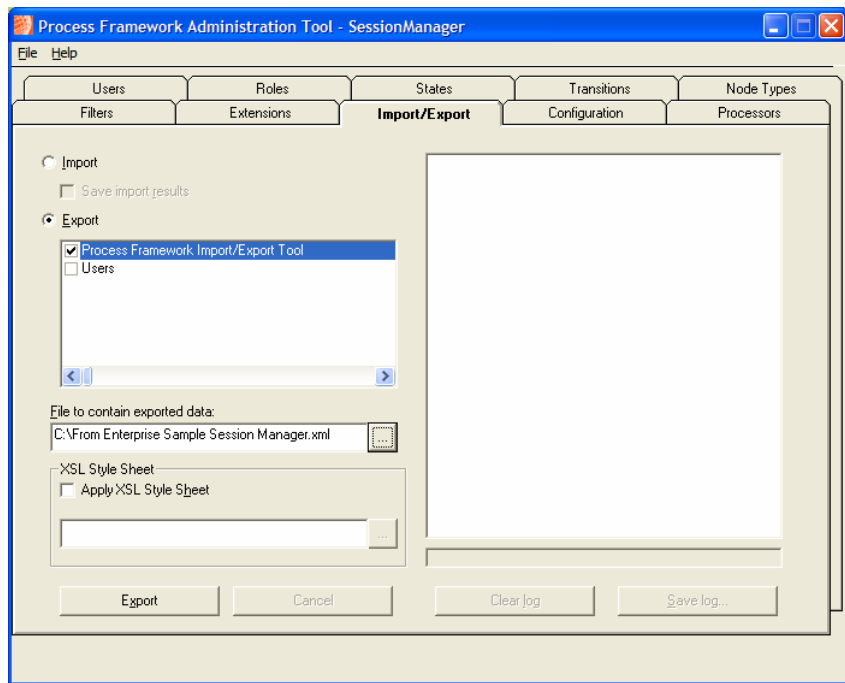
implementing Mobile Designer or Designer Redliner,  
choose **Workflow Manager.mdb**.



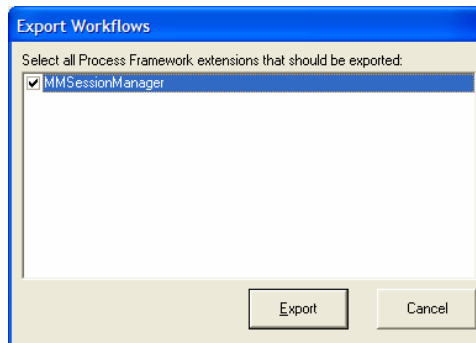
- Double-check that you have chosen SessionManager.mdb or Workflow Manager.mdb, NOT Field SessionManager.mdb or Field Workflow Manager.mdb.
- Click [ **Login** ].
- When the **Process Framework Administration** tool appears, display the **Import/Export** tab.
- Choose the **Export** radio button.
- Check the box for **Process Framework Workflow** or **Process Framework Import/Export Tool**, whichever is offered.
- Under **File to contain exported data**, browse to a convenient location on the Enterprise Client and specify a file name, e.g. **From Sample Session Manager.xml**
- Click [ **Save** ].

**tip**

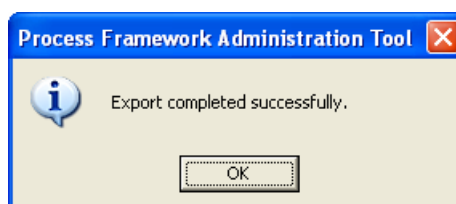
*If the login fails, click [ **Test** ] for more information.*



- In the **Process Framework Administration** tool window, click [ **Export** ].



- When prompted, choose to export the **MMSessionManager** extension. If implementing Mobile Designer or Designer Redliner, export the **MMWorkflowManager** extension.
- Click [ **Export** ].
- Click [ **OK** ] to the export completion message.

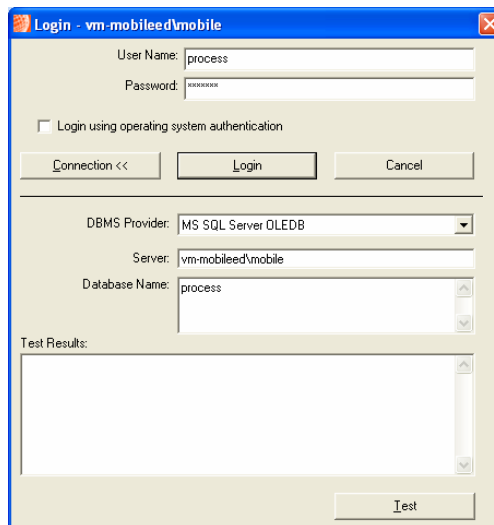


- Close the **Process Framework Administration** tool.

Before altering the enterprise configuration, you will first run any available updates for the enterprise Process Framework database.

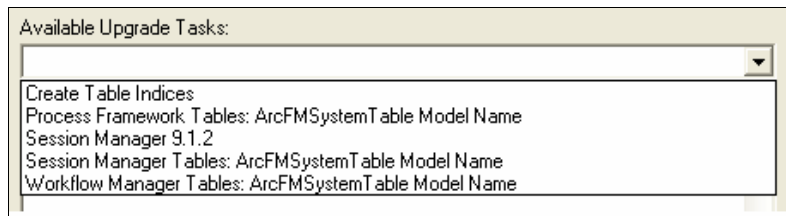
Mobile relies on the correct and complete configuration of the enterprise Process Framework database. The Process Framework Database Upgrade Tool informs you after each upgrade task when additional work is necessary, such as setting permissions on newly created tables. At a client site, you should read carefully all information provided during the upgrade process, and complete any required follow-up tasks. Otherwise, you may encounter errors requiring considerable time to diagnose.

- Still on the Enterprise Client, from the **Start** menu choose **Programs > ArcFM Solution > Process Framework > Administration > Process Framework Database Updater**.
- Click [ **Connection** ] if necessary to expand the dialog.
- For **DBMS Provider** choose **MS SQL Server OLEDB** or **Oracle**.
- For **User Name** enter **process**
- For **Password** enter the correct password for user process.
- For **Server** enter the name of the database server (e.g. **vm-mobileled\mobile**).
- If using SQL Server, for **Database Name** enter the database name (e.g. **process**).



**tip** If the login fails, click [ **Test** ] for more information.

- Click [ **Login** ].
- When the **Process Framework Database Upgrader** window opens, expand the list of **Available Upgrade Tasks**.



**tip** After you run some upgrade tasks, new ones may appear. For example, after running a 9.1.2 upgrade, the 9.2 upgrade will be added to the list and will also need to be run. Some upgrade tasks, including **Create Table Indices**, will remain in the list even after you run them.

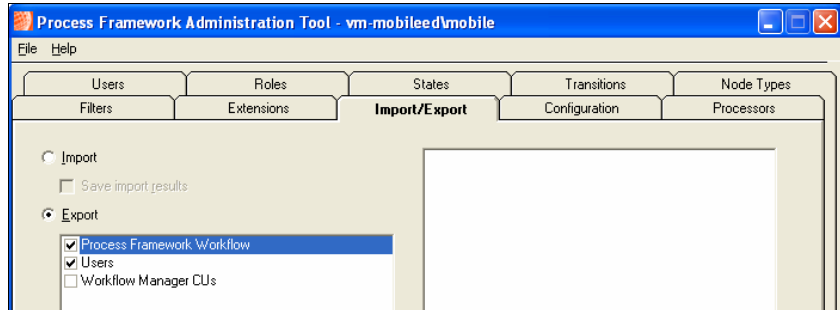
- Choose the first task in the list.
- Click [ **Execute Task** ].
- Examine the information in the **Messages** field carefully. If any follow-up tasks such as setting table permissions are required, note them and complete them before proceeding further with Mobile configuration.
- Run [ **Execute Task** ] for each remaining task in the list. If prompted to choose an SDE Database Connection, browse to the enterprise SDE geodatabase connection using the **sde.DEFAULT** version, as user **sde**. For each task, read the **Messages** information and complete the appropriate follow-up tasks. Skipping the follow-up tasks may prevent Mobile from functioning correctly.

**tip** If you are unsure whether a particular Upgrade Task has been run yet, run it again. Running the same task on a database multiple times is harmless, but failing to run a task may cause problems later.

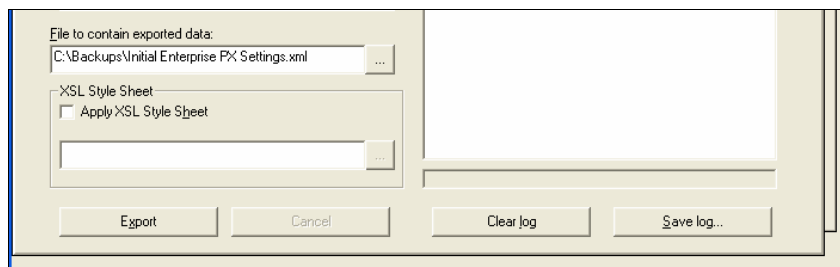
- When you have run all available upgrade tasks, close the **Process Framework Database Upgrade** tool.
- Still on the Enterprise Client, from the **Start** menu choose **Programs > ArcFM Solution > Process Framework > Administration > Process Framework Administration Tool**.
- Log in to the to the enterprise Session Manager database using the same connection information as you entered into the PX Database Updater Login screen.

Before making any changes, export the current settings to XML.

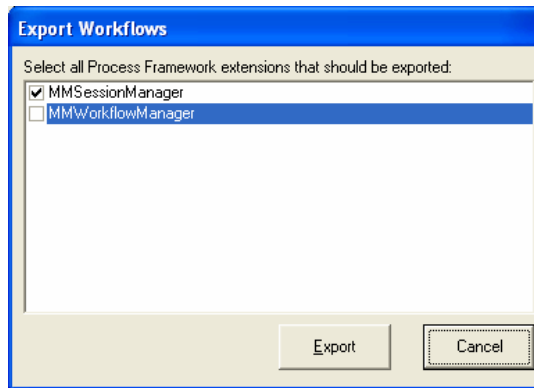
- Display the **Import/Export** tab.
- Choose the **Export** radio button.
- Check the boxes for **Process Framework Workflow** (or **Process Framework Import/Export Tool**) and **Users**. If implementing Mobile Designer, also check the box for **Workflow Manager CUs**.



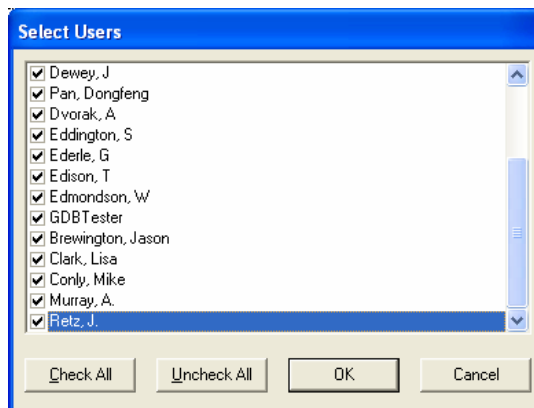
- Under **File to contain exported data**, browse to a convenient location on the Enterprise Client and specify a file name.
- Click **[ Save ]**.



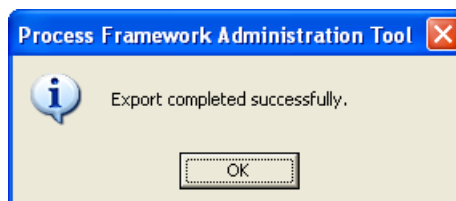
- In the **Process Framework Administration** tool window, click [ **Export** ].
- When prompted, choose to export only the **MMSessionManager** workflow. If implementing Mobile Designer, choose to export only the **MMWorkflowManager** workflow.



- Click [ **Export** ].
- When prompted, choose to export information for all users.

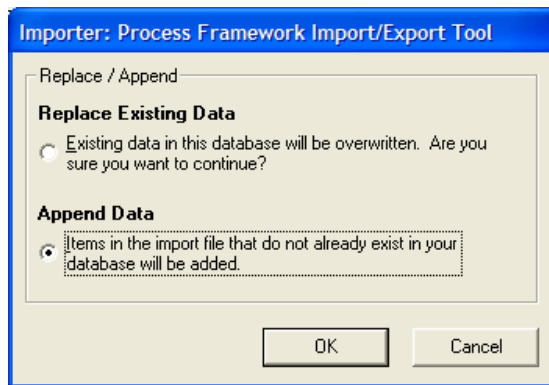


- Click [ **OK** ].
- Click [ **OK** ] to the export completion message.

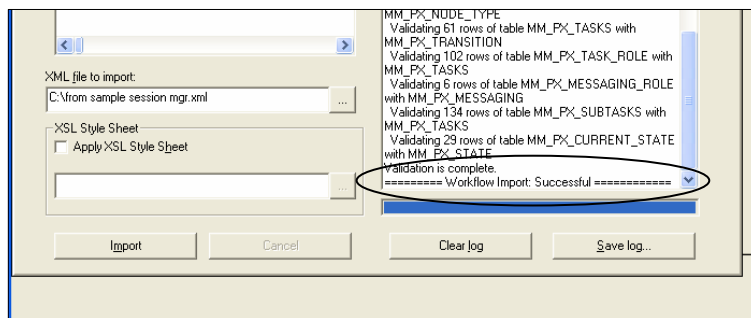


Now that the original settings have been backed up, you will import the Mobile workflow which you earlier exported from the sample Session Manager database.

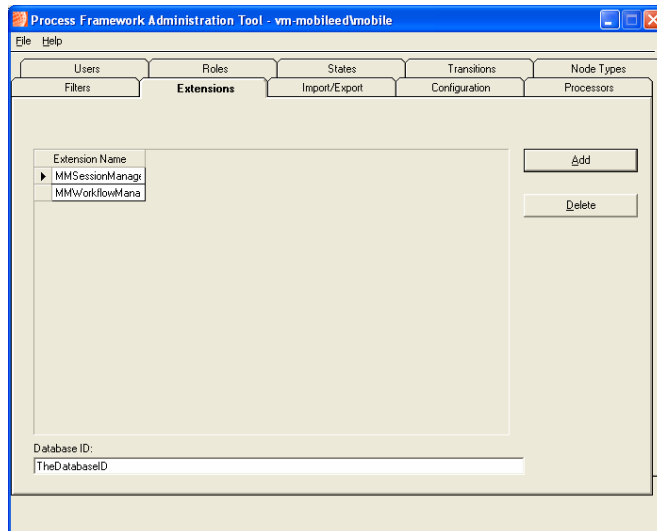
- Choose the **Import** radio button.
- Under **XML file to import**, browse to **From Sample Session Manager.xml**.
- Click **[ Import ]**.
- When prompted, choose **Append Data**.



- Click **[ OK ]**.
- Scroll to the bottom of the log field to verify that the import was successful.



- Choose the **Extensions** tab.
- For **Database ID** enter a value identifying this database (e.g. **TheDatabaseID**).



All Process Framework databases that can exchange Sessions with each other must have the identical DatabaseIDs. The Database ID can be any text string. Later you will enter exactly the same DatabaseID value in the field Process Framework database.

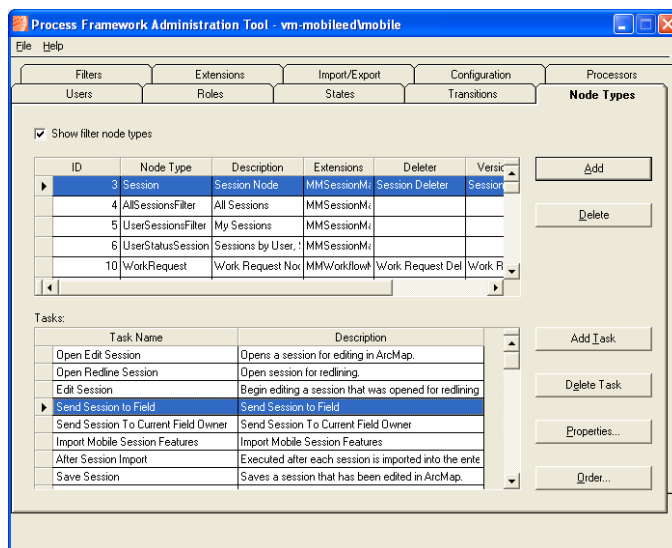
- Display the **Node Types** tab.
- Check the **Show Filter node types** box.
- Select the **Session** node. For a Mobile Designer implementation, select the **Design** node.
- Confirm that the **Tasks** list below includes a **Send Session** (or **Design**) **to Field** task.



If the **Send Session to Field** task is missing, click **Add Task**. In the **Task Properties** dialog, name the new task **Send Session to Field** and check **Visible in Task Tool**. From the **Available Subtasks** list, add (in this order):

- Is Mobile Solution Enabled?
- Change Session Owner To Mobile
- Create Packet
- Send Session to Field

From the **Transition** drop-down, choose **Mobilize Session**. If there is no **Mobilize Session** transition, you will need to add it to the **Transitions** tab before using it in the **Task Properties**. On the **Transitions** tab, add a **Mobile Session** transition, then in **From States** check **In Progress**, for **To State** choose **Mobile**, and allow the following roles to execute this transition: **Session Editor**, **Session Administrator**, **Session Approval Officer**, **Session ALWAYS Mobile User**, and **Session Mobile User**. Return to the **Send Session to Field** **Task Properties** and choose **Mobilize Session** as the **Transition**.



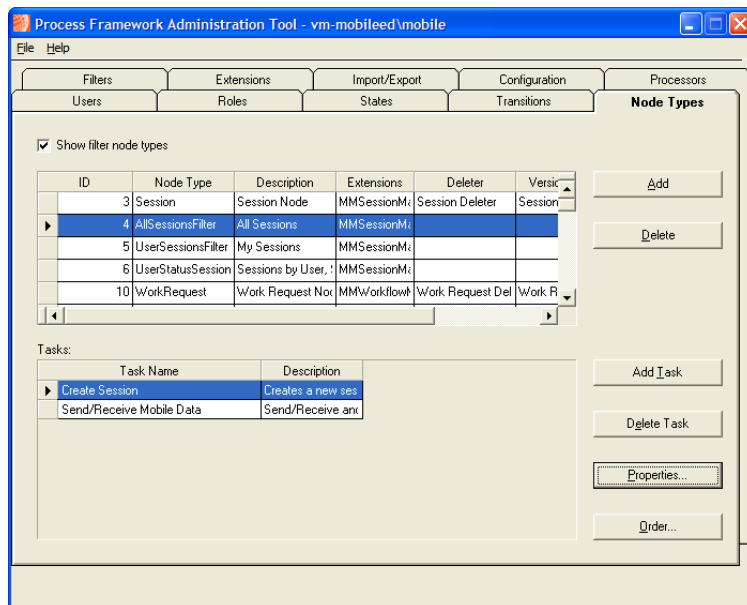


If the **Send/Receive Mobile Data** task is missing from any filter, click **Add Task**. In the **Task Properties** dialog, name the new task **Send/Receive Mobile Data** and check **Visible in Task Tool**. From the **Available Subtasks** lists, add (in this order):

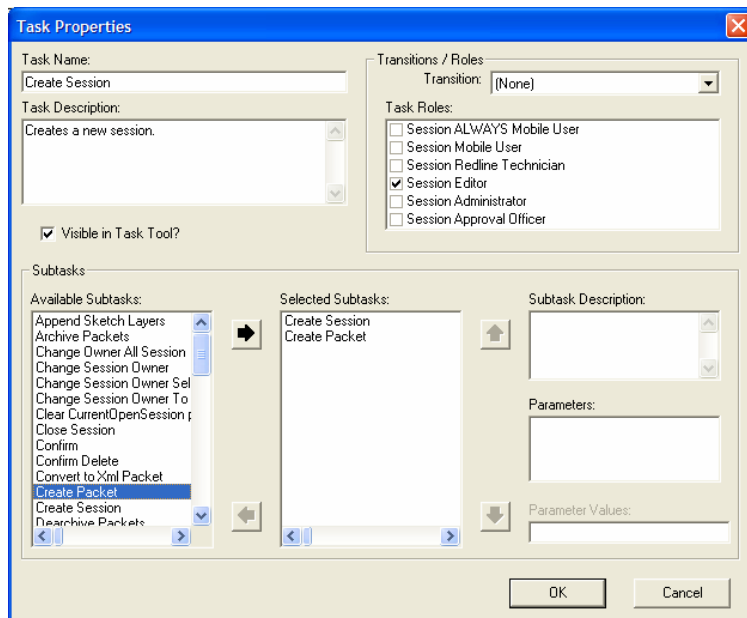
- Is Mobile Solution enabled?
- Is Enterprise Disk Full?
- Mobile Synchronize
- Update Enterprise
- Mobile Synchronize

From the **Transition** drop-down, choose **None**. Under **Task Roles**, check **Session Editor** and **Session Approval Officer**.

- In the **Node Types** (top) list select **AllSessionsFilter**. For a Mobile Designer implementation, select **AllWorkRequests**.
- Confirm that the **Tasks** list below includes a **Send/Receive Mobile Data** task.
- Confirm that each of the other filters - **UserSessionsFilter** and **UserStatusSessionsFilter** - has a **Send/Receive Mobile Data** task. For a Mobile Designer implementation, confirm this for the filters **UserWorkRequests** and **UserStatusWorkRequests**.
- Select the **AllSessionsFilter** and its **Create Session** task.

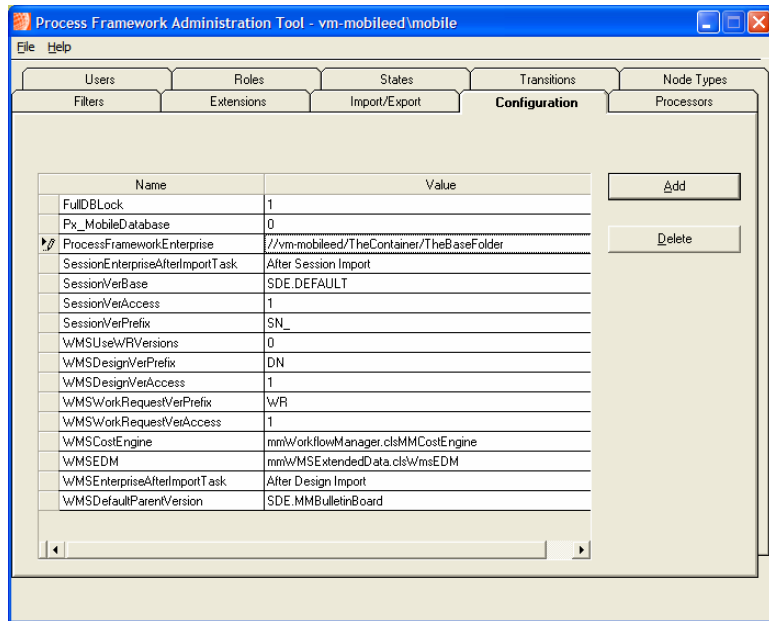


- Click [ **Properties** ].
- In the **Available Subtasks** list, double-click the **Create Packet** subtask.
- In the **Selected Subtasks** list, make sure that **Create Packet** is listed under **Create Session**.



- ❑ Click [ OK ].
- ❑ For **UserSessionsFilter** and **UserStatusSessionsFilter**, add the **Create Packet** subtask to the **Create Session** task, each time making sure it is listed after the **Create Session** subtask.
- ❑ On the **Configuration** tab, add the following name-value pairs EXACTLY as shown below (substituting your actual base path for “\\vm-mobileed\TheContainer\TheBaseFolder”). If these values are already present, update them to match the values shown below:

Name	Value
Px_MobileDatabase	0
ProcessFrameworkEnterprise	\\vm-mobileed\ TheContainer\TheBaseFolder
SessionEnterpriseAfterImportTask	After Session Import



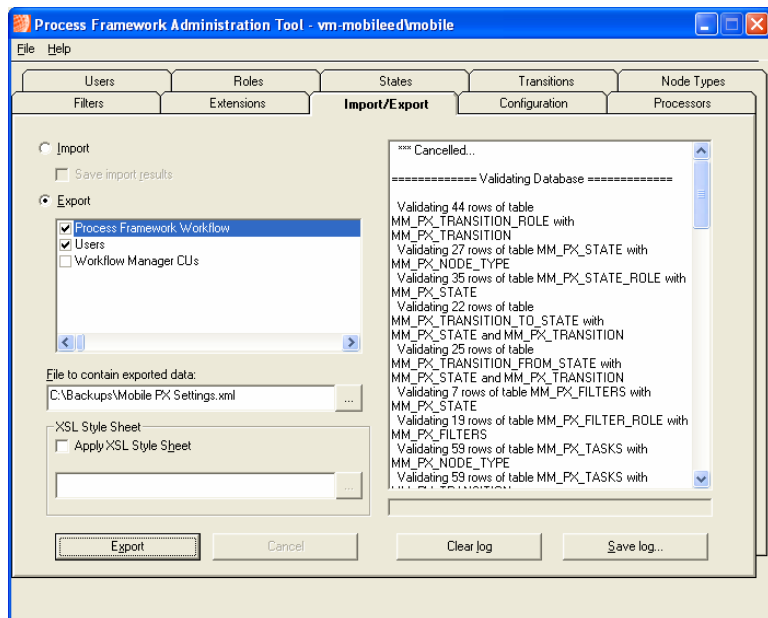
- For a Mobile Designer implementation, add the name **WMSEnterpriseAfterImportTask** with the value **After Design Import**

The PX\_MobileDatabase value of 0 indicates that this is an enterprise Process Framework database. The SessionEnterpriseAfterImport task runs any follow-up tasks needed after Sessions are received from the field.

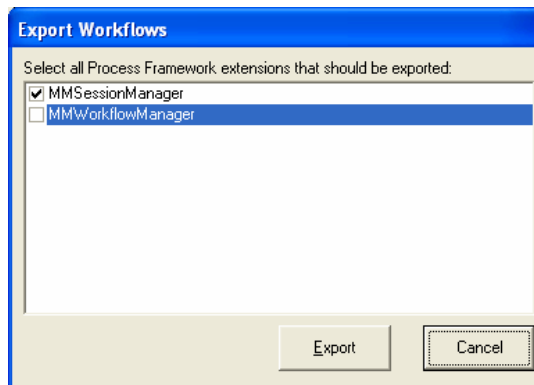
Next you will backup your new settings.

- From the **File** menu choose **Save**.
- Display the **Import/Export** tab.
- Choose the **Export** radio button.
- Check the boxes for **Process Framework Workflow** and **Users**. If implementing Mobile Designer, also check the box for **Workflow Manager CUs**.
- Under **File to contain exported data**, browse to a convenient location on the Enterprise Client and enter a file name.
- Click **[ Save ]**.

**tip** The exported file can be given any filename valid in the Windows operating system. Make sure the name distinguishes it from the file you exported earlier containing the initial, pre-mobile PX settings.



- In the **Process Framework Administration** tool window, click [ **Export** ].
- When prompted, choose to export the **MMSessionManager** workflow. If implementing Mobile Designer, choose to export only the **MMWorkflowManager** workflow.



- Click [ **Export** ].
- When prompted, choose to export information for all users.
- Click [ **OK** ].
- Click [ **OK** ] to the export completion message.
- From the **File** menu, choose **Save**.

- Close the **Process Framework Administration** tool.

## **STEP 2: CONFIGURE THE FIELD PROCESS FRAMEWORK DATABASE FOR MOBILE**

---

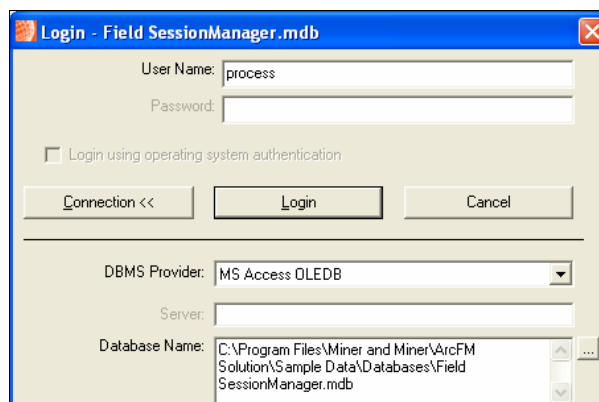
**tip**

Consider moving the *Field SessionManager.mdb* file to a different location to keep the *ProcessFrameworkSampleData.exe* from overwriting this database the next time it is unzipped.

- Still on the Enterprise Client, from the **Start** menu choose **Programs > ArcFM Solution > Process Framework > Administration > Process Framework Database Updater**.
- If necessary, click [ **Connection** ] to expand the dialog.
- For **DBMS Provider**, choose **MS Access OLEDB**.
- For **User Name** enter **process**
- For **Database Name**, click the **Browse** (three dot) button and navigate to **Field SessionManager.mdb** (for Mobile Designer or Designer Redliner, use **Field WorkflowManager.mdb**) in **Program Files\Miner and Miner\ArcFM Solution\Sample Data\Databases**.

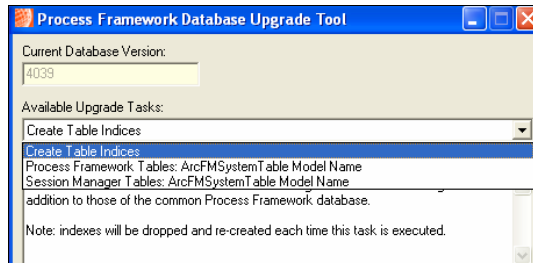
Be careful to choose the right Field database, not *SessionManager.mdb* or *WorkflowManager.mdb*.

- Click [ **Open** ].

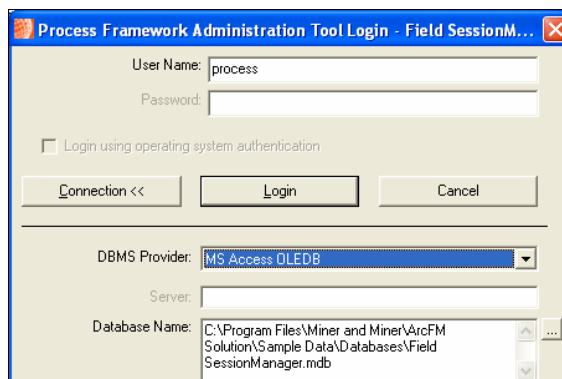


- Click [ **Login** ].

- ❑ For each **Available Upgrade Task**, click [ **Execute Task** ]. If prompted for an SDE Database Connection, cancel the task and try the next available task.

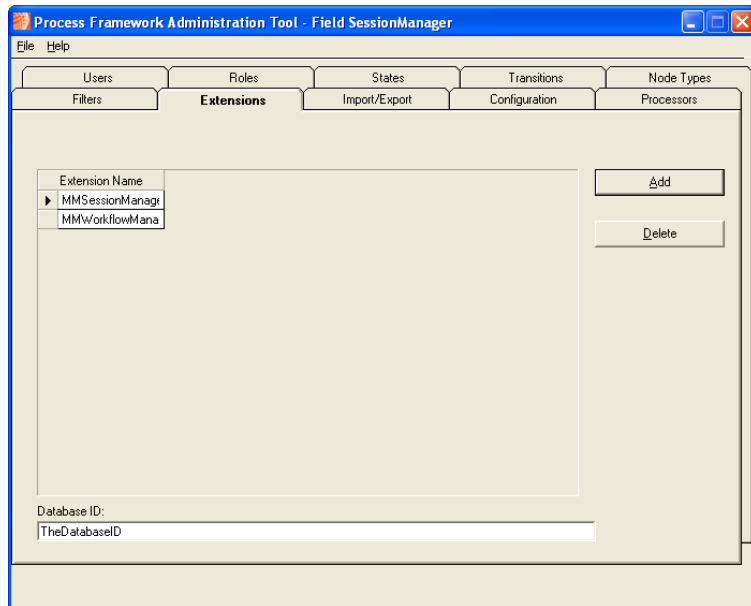


- ❑ When you have run or cancelled all available upgrade tasks, close the **Process Framework Database Upgrade** tool.
- ❑ Still on the Enterprise Client, from the **Start** menu choose **Programs > ArcFM Solution > Process Framework > Administration > Process Framework Administration Tool**.
- ❑ Log in to the **Field SessionManager.mdb** (or Field WorkflowManager) database using the same connection information as you entered into the PX Database Updater Login screen.



First you will set the DatabaseID to be identical to the DatabaseID you chose in the enterprise process framework properties. If the two DatabaseIDs are not identical, Send/Receive will fail.

- ❑ Display the [ **Extensions** ] tab.
- ❑ For **DatabaseID** enter the database ID (e.g. **TheDatabaseID**).



Because you started with the sample Field SessionManager.mdb (or Field WorkflowManager.mdb) database, all necessary Node Tasks are already present. However, any unnecessary enterprise-only tasks should be deleted.

- Display the **Node Types** tab.
- Select the **Session** node (for Mobile Designer or Designer Redliner, select **Design**).
- If any of the following tasks appear in the Task list, delete them:

**Send Session to Current Field Owner**  
**Send Session to Field**  
**Conflicts Report**  
**Edit Log Report**

Next you will set the Name/Value pairs needed by Mobile.

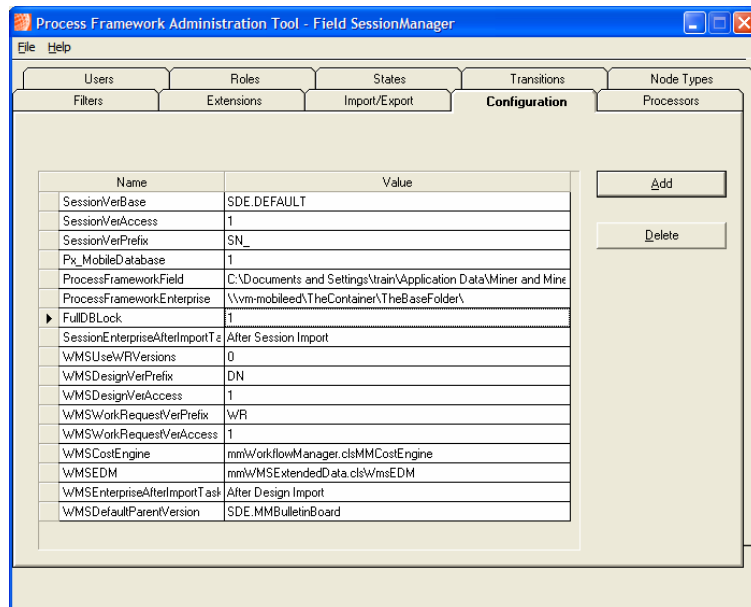
- Display the **Configuration** tab.

**etc** *The **Send Session to Current Field Owner** task should only appear in enterprise, not field Process Framework databases.*

- Add or edit the following name-value pairs to make them EXACTLY as shown below (substituting your actual base path for “\\vm-mobiled\TheContainer\TheBaseFolder”). If these values are already present, update them to match the values shown below:

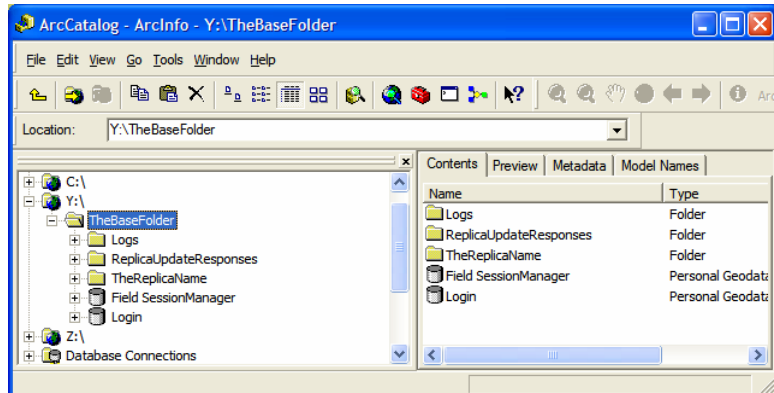
Name	Value
Px_MobileDatabase	1
ProcessFrameworkEnterprise	\\vm-mobiled\ TheContainer\TheBaseFolder
SessionEnterpriseAfterImportTask	After Session Import

- For a Mobile Designer implementation, add the name **WMSEnterpriseAfterImportTask** with the value **After Design Import**
- Add the **ProcessFrameworkField** name, and set the value to a folder that will not be needed by other software (e.g. C:\TheContainer). If this folder does not already exist, create it.



- From the **File** menu, choose **Save**.
- Close the **Process Framework Administration Tool**.
- Still on the Enterprise Client, start **ArcCatalog**.

- Using ArcCatalog, copy **Field SessionManager.mdb** (or **Field WorkflowManager.mdb**) to the Field Unit base directory (e.g. Y:\TheContainer\TheBaseFolder).



### STEP 3: TEST THE FIELD PROCESS FRAMEWORK DATABASE

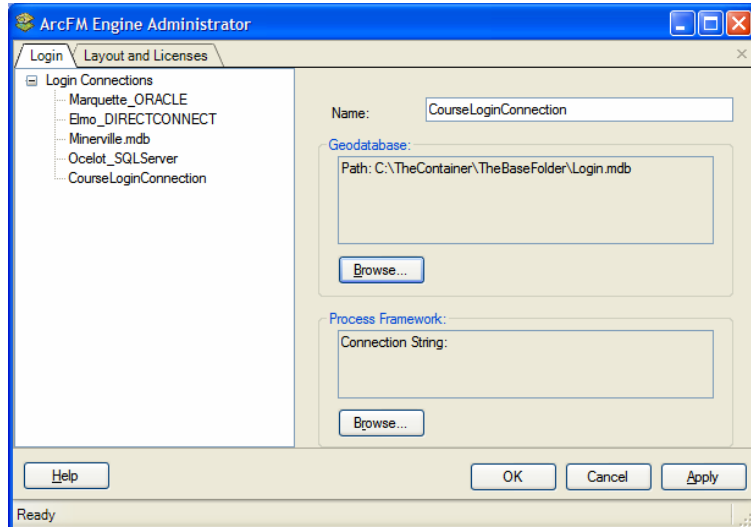
#### Implementation-Specific Steps

Applies to: Implementations on the ArcMap platform  
**Mobile ArcFM, Mobile Designer**

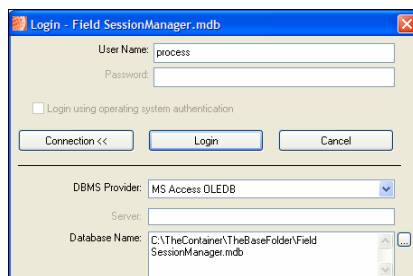
- On the **Field Unit**, start **ArcMap**.
- In the ArcFM or Designer login screen, browse to the **Login** database.
- Apply a Stored Display.
- Open **Session Manager** or **Workflow Manager**.
- Create a new Session or Design.
- Delete the Session/Design.
- Close **Session Manager** or **Workflow Manager**.
- Close **ArcMap**.
- Skip all instructions below regarding the **ArcFM Engine Administrator** and **ArcFM Viewer for ArcGIS Engine** and jump to the next step.

- On the **Field Unit**, from the **Start** menu choose **Programs > ArcFM Solution > ArcFM Engine Administrator**.

- Display the **Login** tab.
- Expand **Login Connections**.
- Select the login connection you created earlier.

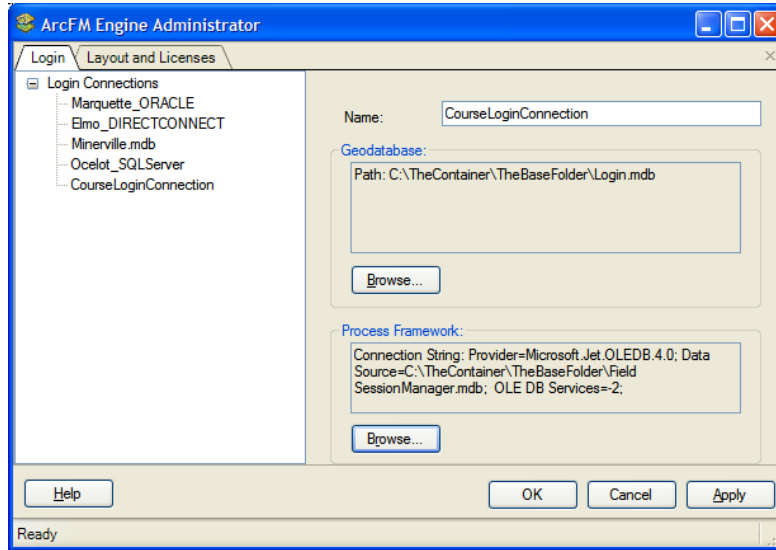


- On the right side of the window, under **Process Framework**, click [ **Browse** ].
- If necessary, click [ **Connection** ] to expand the dialog.
- For **DBMS Provider**, choose **MS Access OLEDB**.
- For **User Name** type **process**
- For **Database Name**, browse to the **Field SessionManager.mdb** (or **Field WorkflowManager.mdb**) database in the Field Unit base path **C:\TheContainer\TheBaseFolder**.

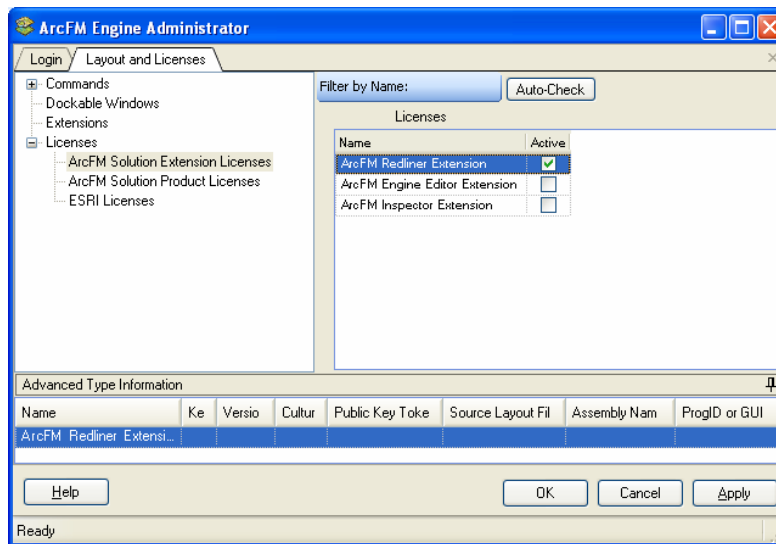


- Click [ **Open** ].

- In the **Field SessionManager** window click [ **Login** ].



- Display the **Layout and Licenses** tab.
- Expand **Licenses**.
- Confirm that the correct licenses are checked.



- Click [ **Apply** ].
- Click [ **OK** ] to close the **ArcFM Engine Administrator**.

**tip**

The **User Name** you specify in the ArcFM Viewer for ArcGIS Engine login screen will also be your Session Manager (or Workflow Manager) user name and so should be included on the Users tab in the Process Framework Administrator Tool. You will only be able to open Sessions owned by the user you are currently logged in as. If you enter the wrong user name, you can change identities later in the Session Manager window by opening the File menu and choosing Login, then specifying a different User Name.

- Still on the Field Unit, from the **Start** menu choose **Programs > ArcFM Solution > ArcFM Viewer for ArcGIS Engine**.
- Choose the **CourseLoginConnection**.
- For **User Name** enter a configured end-user login (that is, a user who has been granted appropriate permissions in the Process Framework database).

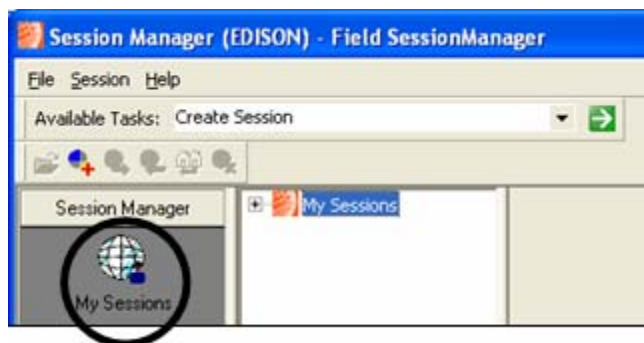


- Click **[ OK ]**.
- In the **ArcFM Viewer for ArcGIS Engine** window, show the **Session Manager** toolbar, if necessary.
- On the **Session Manager** toolbar, click **Open Session Manager**.
- When the Session Manager window appears, from the filter list on the left choose **My Sessions**.

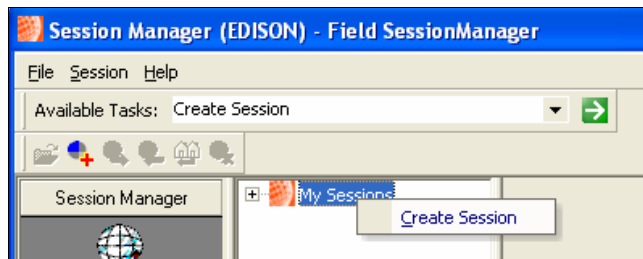
**I**



Look for the **Open Session Manager** button on the Session Manager toolbar.



- In the central “tree” section, right-click the **My Sessions** node and choose **Create Session**.

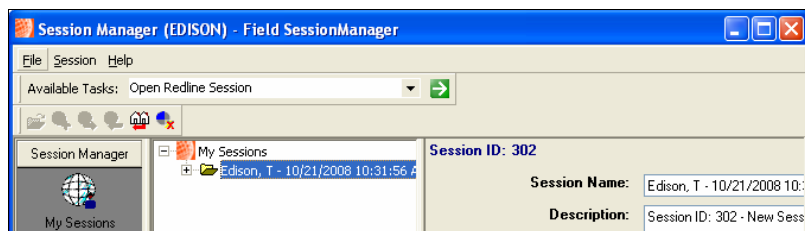


- Right-click the newly created session and choose **Delete Session**.
- When prompted to confirm the deletion, click [ **Yes** ].


## ***PART 2: CONFIGURING SEND/RECEIVE*** \_\_\_\_\_

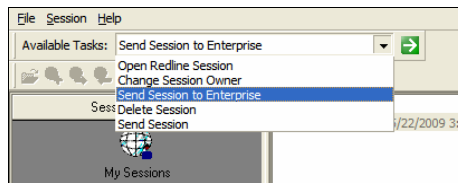
### ***STEP 1: TEST MANUAL SEND/RECEIVE*** \_\_\_\_\_

- Still on the Field Unit, create and open a new Session or Design.
- Draw some ink on the map and/or edit features as permitted by your implementation.
- Save and close the Session/Design.
- Open Session Manager** or **Workflow Manager**.
- Expand the top node.

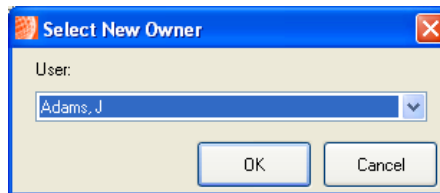


- Select the Session or Design you just created.
- From the **Available Tasks** drop-down choose **Send Session to Enterprise**.

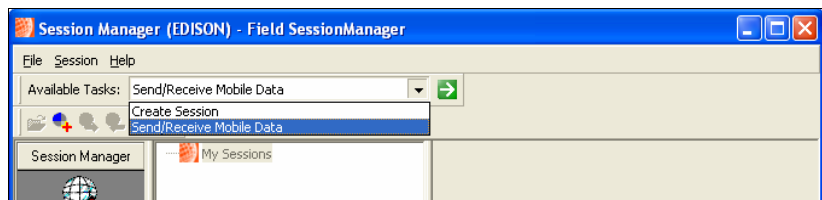
**I**  Look for the **Execute Selected Task** button beside the list of Available Tasks.



- Click the green **Execute Selected Task** button.
- When prompted to select a new owner, choose an enterprise user with the role of Approval Officer.

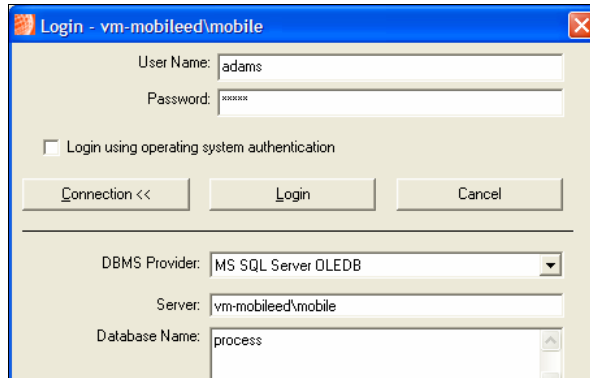


- Click [ **OK** ].
- Select the top node.
- From the **Available Tasks** drop-down choose **Send/Receive Mobile Data**.



- Click the green **Execute Selected Task** button.
- Observe that your Session or Design is no longer listed.
- Close **Session Manager** (or **Workflow Manager**) and **ArcFM Viewer for ArcGIS Engine** or **ArcMap**.
- On the **Enterprise Client**, start **ArcMap**.
- In the **Login to ArcFM** screen, connect to the enterprise SDE geodatabase **Sync** version as the enterprise user with the role of Approval Officer (the same user to whom you just sent the Session/Design).
- Apply a **Stored Display**.

- Show the **ArcFM Session Manager** toolbar, if necessary.
- Open Session Manager.**
- If prompted, login with the same user name and password.



- In the filter list on the left, choose **My Sessions** (or **My Designs**).
- In the tree, select the top node.
- From the **Available Tasks** drop-down choose **Send/Receive Mobile Data**.
- Click the green **Execute Selected Task** button.
- When the Session or Design you sent from the field appears in the list, select it.
- From the **Available Tasks** drop-down choose **Open Redline Session**.
- Click the green **Execute Selected Task** button.
- On the map, view the redlining or editing that was originally done in the field.
- For further testing, create a new Session or Design on the Enterprise Client. Run **Send Session to Field** on the new Session or Design, and choose the field user. Select the top node (**My Sessions** or **My Designs**) and run **Send/Receive Mobile Data**.
- On the **Field Unit**, login as the field user and run **Send/Receive Mobile Data**. The new Session or

**I** *If the Session does not reach the Enterprise Client user, check the Event Viewer on all three machines. You may need to create the Enterprise Server and/or Field Unit **Working Dir** folders manually.*

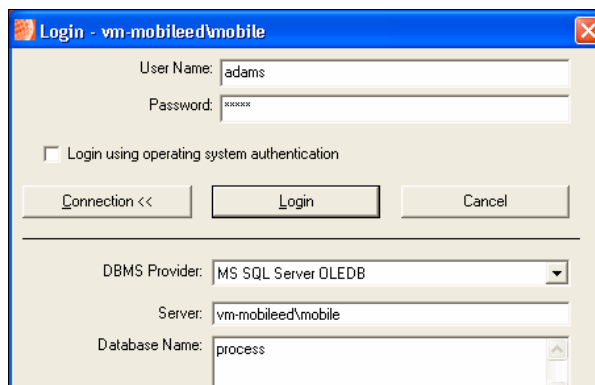
Design (created on the Enterprise Client) should now be visible in the tree.

## STEP 2: CONFIGURE AUTOMATED SEND/RECEIVE VIA PROCESS FRAMEWORK REPLICATION

This step is optional but highly recommended. In Mobile versions 9.3 SP1 and earlier, ArcFM Desktop must be installed (although no ArcFM Desktop license is needed) on the Replication Server for this process to succeed.

- On the **Replication Server**, from the **Start** menu choose **Programs > ArcFM Solution > ArcFM Geodatabase Replication > ArcFM Geodatabase Replication Administrator**.
- From the **File** menu choose **Open Configuration File**.
- Browse to **Program Files\Miner and Miner\ArcFM Solution\Bin\ReplicationConsole.exe.config**.
- Right-click **General Category** and choose **New > Process Framework Replica Server**.
- Select the **Process Framework Replica** node.
- For the **Replica Name** enter a new replica name (e.g. **TheSendReceiveReplica**).
- Verify that **Enabled** is set to **True**.
- For the **Database Name** connect to the **enterprise PX database** as a user with the Approval Officer role.

**I** When browsing for the field or enterprise PX database, the user account used to connect must have permission to execute the **Send/Receive Mobile Data** task.

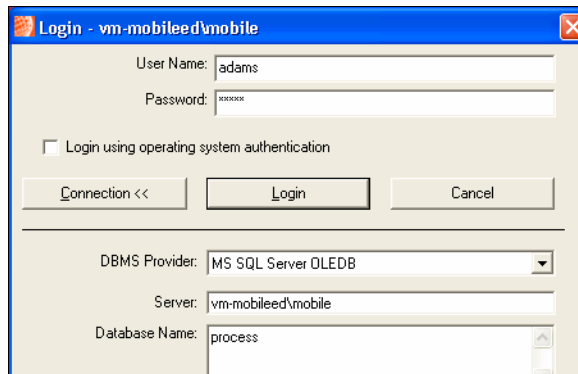


- Click **[ Login ]**.

- Save the settings, correct any errors, and close the **ArcFM Geodatabase Replication Administrator**.

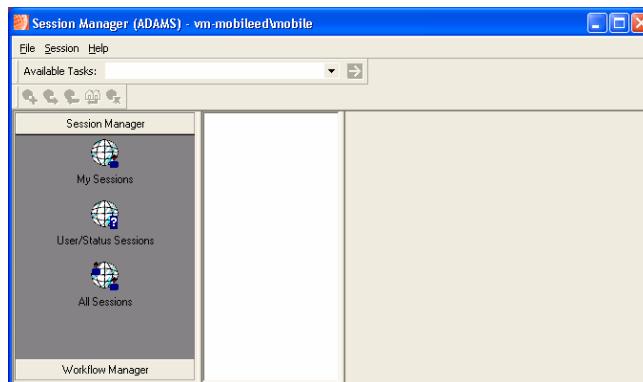
During automated Send/Receive, the Replication Server accesses the enterprise Process Framework database. To verify that the Replication Server has the necessary permissions, and to initialize some Windows Registry keys, you will open the stand-alone Process Manager tool.

- From the **Start** menu, choose **Programs > ArcFM Solution > Process Framework > Process Manager**.
- Connect to the **enterprise PX database** as the same user you specified in the ArcFM Geodatabase Replication Administrator.



- Click [ **Login** ].

The Session Manager interface should appear.



- If any error messages appear, resolve them before continuing.



*Opening stand-alone **Session Manager** or **Workflow Manager** on the Replication Server verifies that the server has the necessary permissions to run Process Framework processes, and initializes some Windows Registry keys.*

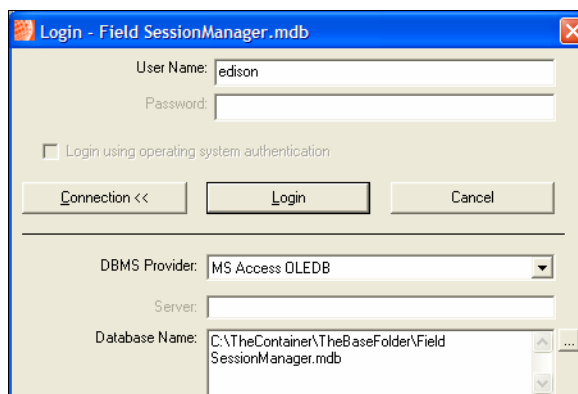
- Close **Session Manager**.

Next you will enter the necessary settings on the Field Unit to trigger Send/Receive during client-side replication.

- On the **Field Unit**, from the **Start** menu choose **Programs > ArcFM Solution > ArcFM Geodatabase Replication > ArcFM Geodatabase Replication Administrator**.
- From the **File** menu choose **Open Configuration File**.
- Browse to **Program Files\Miner and Miner\ArcFM Solution\Bin\ReplicationConsole.exe.config**.
- Right-click **General Category** and choose **New > Process Framework Replica Client**.
- Select the **Process Framework Replica** node.
- For the **Replica Name** enter the name you set on the Replication Server, e.g. **TheSendReceiveReplica**
- Verify that **Enabled** is set to **True**.
- For the **Database Name** connect to the **Field Session Manager** (or **Field Workflow Manager**) database as the field user who will use this machine.



*The Process Framework replica for use with Send/Receive is a different replica than the Backdrop geodatabase replica, and so must have a different Replica Name. Both the Replication Server and Field Unit Process Framework replicas must have the same Replica Name.*



- Click [ **Login** ].
- Save the settings, correct any errors, and close the **ArcFM Geodatabase Replication Administrator**.

With the new replica configured on both the Replication Server and the Field Unit, you can now test automated Send/Receive.

- Still on the Field Unit, start **ArcFM Viewer for ArcGIS Engine** or **ArcMap**.
- From the **Stored Items List**, choose a Stored Display.
- Create a new Session/Design and draw ink or make edits in it.
- Save and close the Session/Design.
- Open Session Manager** or **Workflow Manager**.
- Select the Session/Design you just created (NOT the top node).
- From the **Available Tasks** drop-down choose **Send Session to Enterprise**.
- Click the green **Execute** button.
- When prompted to select a new owner, choose the enterprise user with the role of Approval Officer.
- Click **[ OK ]**.

Notice that you are not going to choose Send/Receive Mobile Data. Instead, you will run ArcFM Geodatabase Replication Client, and it will trigger Send/Receive because of the Process Framework replica you configured.

- Close **Session Manager/Workflow Manager** and **ArcFM Viewer for ArcGIS Engine** or **ArcMap**.
- Still on the Field Unit, from the **Start** menu choose **Programs > ArcFM Solution > ArcFM Geodatabase Replication > ArcFM Geodatabase Replication Client**.

If your version of ArcFM GDB Replication Server is 9.3 SP 1 or earlier, a Send/Receive Process Framework replica will only succeed if you install ArcFM (which includes certain necessary.dll files) on the Replication Server. You will not need an ArcFM license for the Replication Server. ArcFM GDB Replication Server versions 9.3 Rev 2 and later include these .dll files, so no additional software is required on the Replication Server.

- After the client replication process is complete, on the **Replication Server**, from the **Start** menu choose **Programs > ArcFM Solution > ArcFM Geodatabase Replication > ArcFM Geodatabase Replication Server**.
- On the **Enterprise Client**, start **ArcMap**.
- In the **ArcFM Login** screen, connect to the enterprise SDE geodatabase using the **Sync** version, as the enterprise user with the Approval Officer role.
- From the **Stored Displays** drop-down choose a Stored Display.
- Open Session Manager** or **Workflow Manager**.

Notice that you are not going to choose Send/Receive Mobile Data. Instead, Send/Receive was already triggered on the Enterprise Client when you ran the ArcFM Geodatabase Replication Server command.

- Observe that the Session/Design you sent from the Field Unit is now available.
- Open this Session/Design and view its content.
- Following your review, close the session and **ArcMap**.

***CHECKLIST END*** 

---