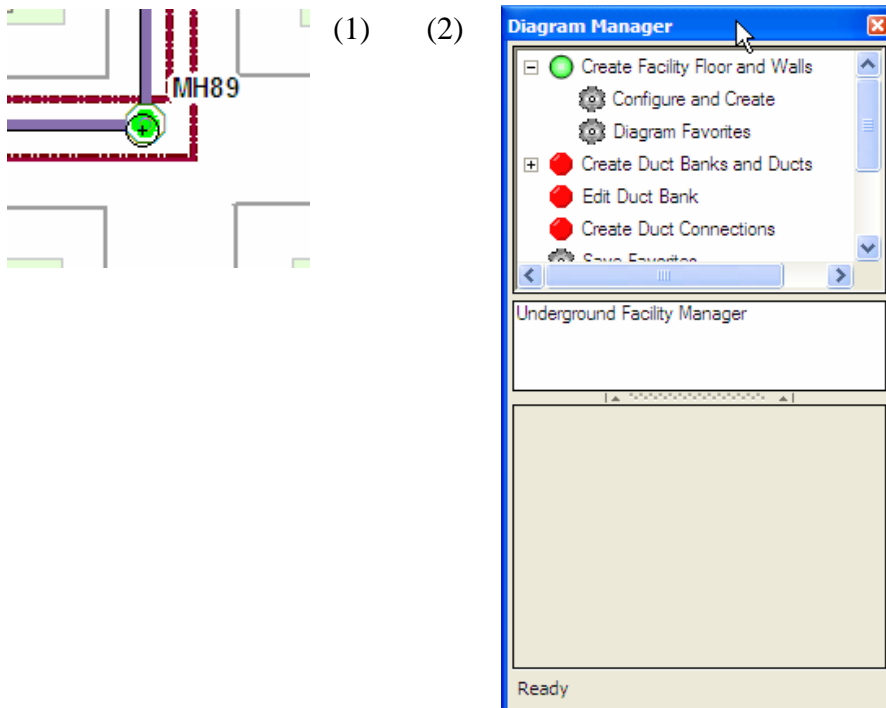


How to Create a Circular Structure Favorite

- Apply a stored display that is configured for Underground Facilities.
- If necessary, in the Table of Contents, Display tab move the UFM Floor layer above the UFM Wall layer.
- Start an Edit Session.
- Launch the Underground Facility Diagram Manager.



- Click on an existing Underground Structure (1) to launch the Diagram Manager dialog. (2).

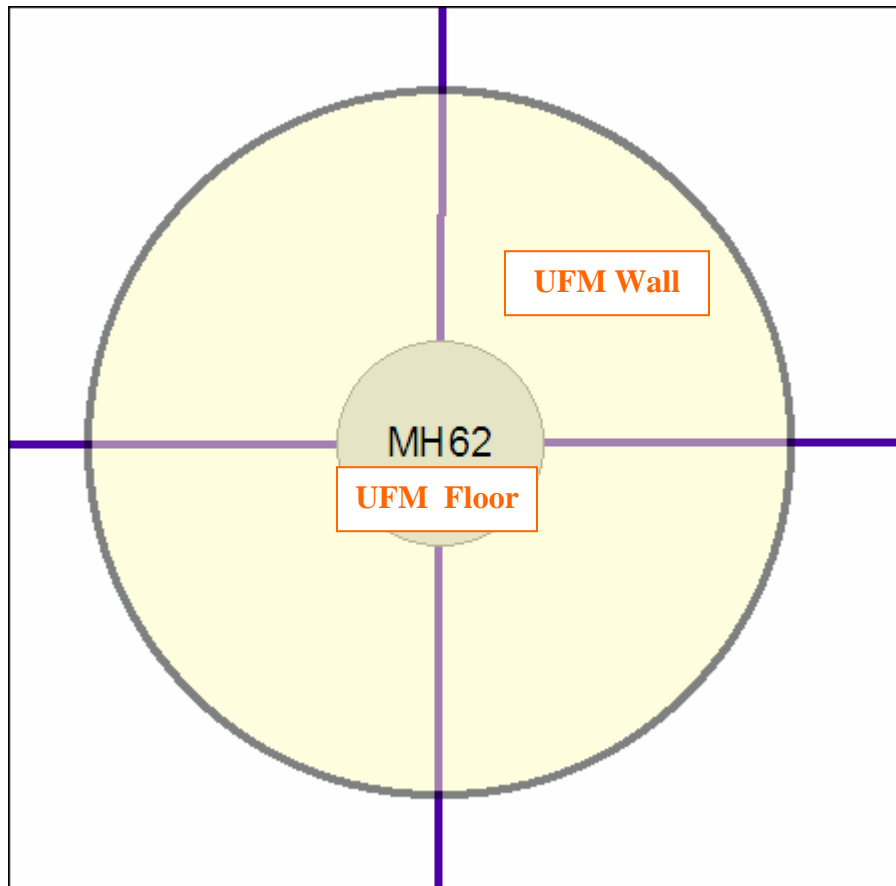


The Create Facility Floor and Walls > Configure and Create option in the Diagram Manager will only allow you to create square floor butterfly diagrams, so instead you will sketch the Floors and Walls using the UFM Floors and UFM Walls feature classes directly.

- In the Table of Contents, Features tab, select your UFM Walls feature class.
- On the Advanced Editing toolbar, choose the Circle Tool.



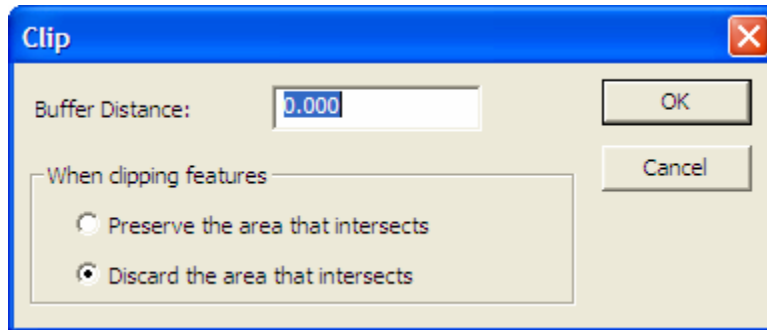
- Click to place the center of the circle. You can use snapping to ensure the center of each circle is at the same location, by snapping to conduit, electric line, or other features already existing at that center point.
- Press the R key to enter a radius. When you press Enter afterward, the new feature will appear.
- Follow the same steps to sketch the UFM Floor as a smaller circle within the UFM Wall feature.



Next you will create the 'hole' in the center of the wall so that the floor and walls do not overlap.

- Select ONLY the FLOOR that you just sketched.
- From the Editor menu, choose Clip.

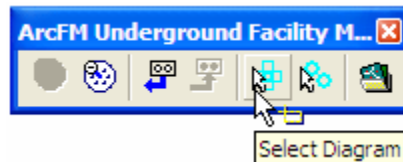
- In the dialog that appears, choose 'Discard the area that intersects' option.



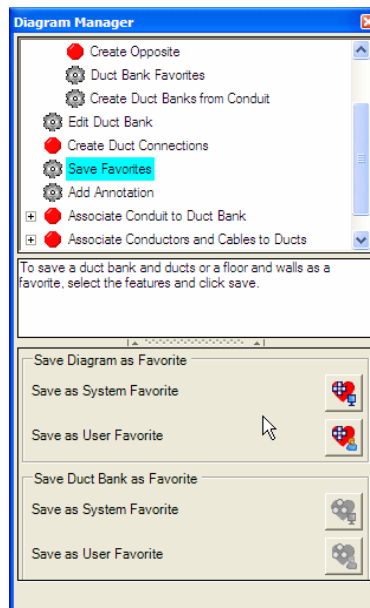
You see that the clip succeeded by unchecking the UFM Floor layer in the Table of Contents, Display tab. There should now be a hole in the UFM Wall feature where the floor sits.

Next you will save the new floor and wall as a Composite Favorite.

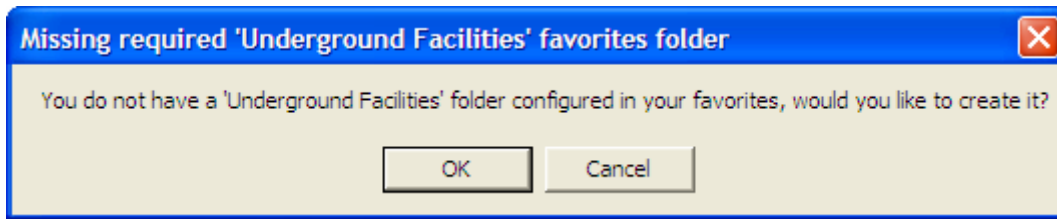
- On the ArcFM Underground Facility Manager toolbar, click the Select Diagram tool to automatically select the newly created diagram.



- In the Diagram Manager, top frame, click Save Favorite.
- In the Diagram Manager, lowest frame, click Save as Diagram Favorite (System or User, depending on your privileges).



- If you have not created a UFM Favorite, yet, you will be prompted to create a category.



- Click [OK].
- When the Composite Favorite dialog opens, modify attributes, name, etc. as usual for any ArcFM Composite Favorite.



- Click [Create], then click [Close].
- Clear Selected Features.

Now you can reuse this circular diagram with ease, and share it with others!