



## Helpful ArcFM Options

From the ArcMap Main Menu, choose **Tools**, then **ArcFM Options** to access the following options:

### General Tab

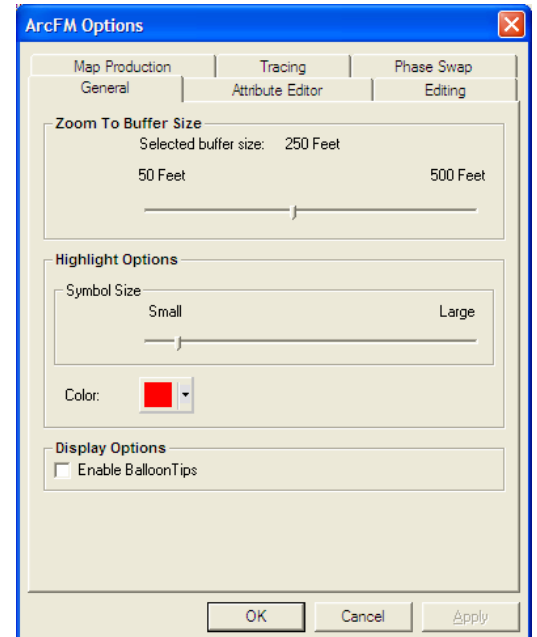
When you right-click a feature listed in the ArcFM Attribute Editor or ArcFM Locator, you can choose the Zoom to command to center the map display on that feature, or the Highlight command to flash a bright color over the feature.

#### *Zoom to Buffer Size*

Use this slider to determine how much of the map will be visible around the zoomed to feature. A smaller buffer gives a closer view.

#### *Highlight Options - Symbol Size & Color*

Use the Symbol Size slider to choose how large the flashing area over a highlighted feature will be. From the Color palette, you may choose a different flashing color.



### Attribute Editor Tab

#### *Enable Automatic Tab Activation*

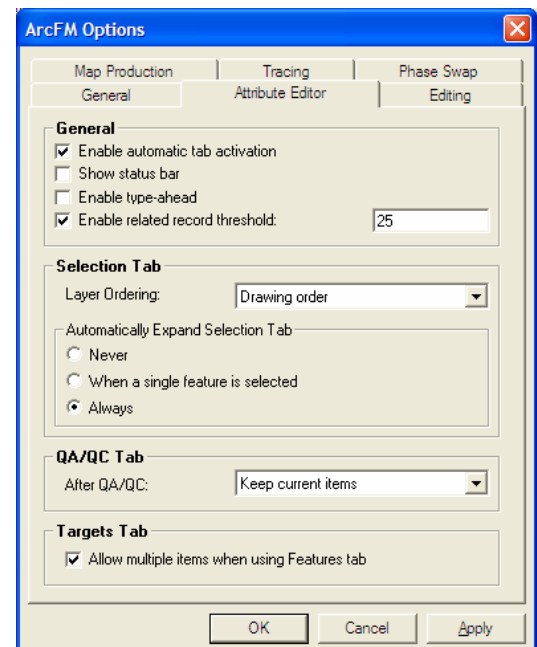
Check this option to let the active ArcFM Attribute Editor tab change in response to your actions. When you choose a feature to sketch from the Table of Contents Features tab, the Targets tab will immediately become active in the ArcFM Attribute Editor. When you select map features, the Selection tab will become active.

#### *Show status bar*

Check this box to see a count of the selected features at the bottom of the ArcFM Attribute Editor. This is not the same as the ArcMap status bar.

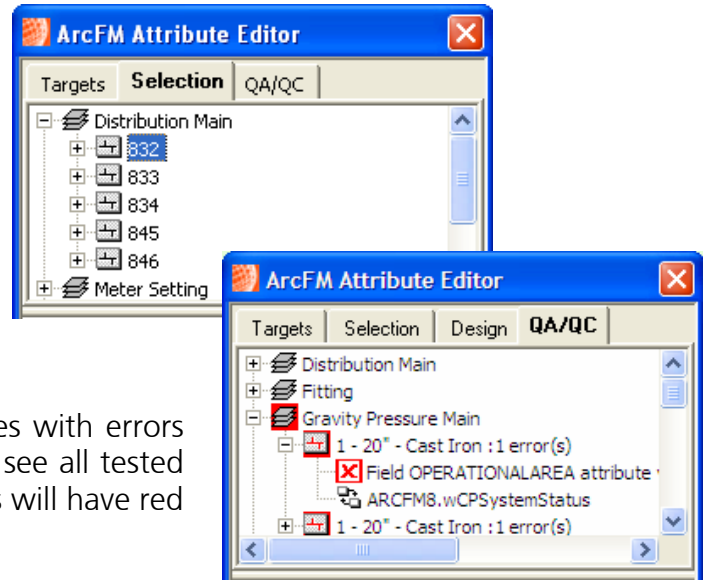
#### *Enable related record threshold*

Check this option to improve performance by limiting the number of related records displayed in the ArcFM Attribute Editor. Uncheck it to see all related records.



### Automatically Expand Selection Tab

Choose *Always* to make the first layer listed in the ArcFM Attribute Editor Selection tab expand immediately after the selection action, showing all its selected features and saving you a click. Alternately, choose *When a single feature is selected* to allow automatic expansion only when just one feature is selected, avoiding the performance hit for displaying long feature lists.



### After QA/QC

Choose *Keep only invalid items* to see only features with errors on the QA/QC tab. Choose *Keep current items* to see all tested features on the QA/QC tab; any features with errors will have red backgrounds behind their icons.

### Allow multiple items when using Features tab

Keep this option checked to build up a list of features on the Targets tab, each of which will keep the attribute settings you give it and remain available for sketching additional features until you choose to remove it from the Targets tab. This saves considerable time over choosing the same kind of feature repeatedly from the Features tab. When this option is unchecked, only one feature at a time will appear on the Targets tab.

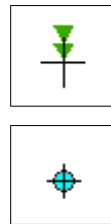
## Editing Tab

### Group items by dataset

Check this option to organize the features on the Table of Contents Features tab by their source dataset.

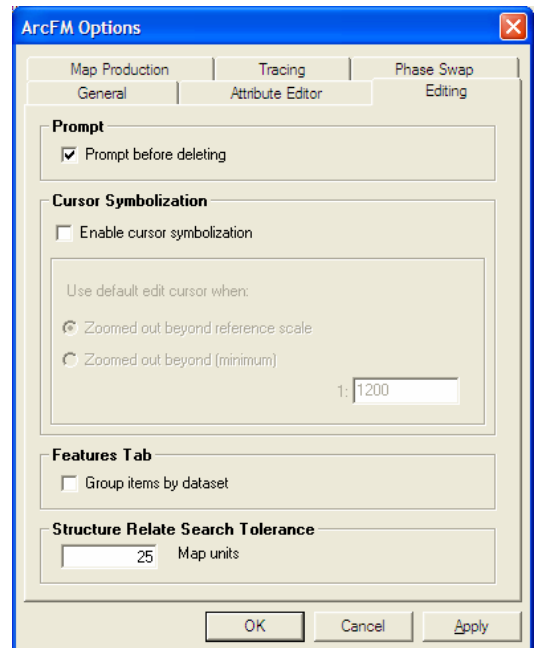
### Enable cursor symbolization

Check this box to make the cursor resemble the type of point feature you are about to sketch. This may slow performance. If the box is unchecked, the cursor appears as a cross-hair over a blue circle for all features.



### Structure Relate Search Tolerance

Some features upon creation immediately search the nearby area for other important features. For example, an overhead Transformer might search for a nearby Pole, and if successful, copy the Pole's LocationID attribute value into the Transformer's LocationID. If no Pole is found within the distance you set here, the Transformer's LocationID will remain NULL, and a warning message will inform the user that no suitable feature was found within the Structure Relate distance.



## Tracing Tab

When running an ArcFM trace (e.g. ArcFM Upstream Protective Device Trace) over utility features, you may display a buffer around the features identified by the trace to make them easier to spot on the map.

### *Draw Buffer*

Check this option to draw a buffer around future trace results.

### *Buffer Distance*

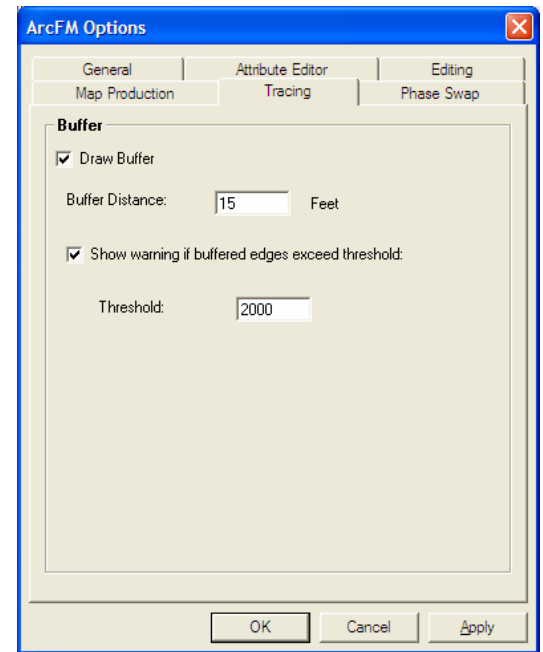
Enter the width the buffer should have on all sides of the identified features.

### *Show warning if buffered edges exceed threshold*

If the buffer must surround a large number of features, requiring a potentially time-consuming map rendering, give the user an opportunity to cancel drawing the buffer.

### *Threshold*

The buffer cancellation opportunity message will appear if at least this many features are found by the trace.



## Phase Swap Tab

### *Disregard conductor/device phase designation*

If a Phase Swap changing phase B features to phase C proceeds downstream to a meeting point with one or more phase A features, should it stop, or should it alter these phase A features to phase C as well? Check this option to allow Phase Swap to change all downstream features regardless of their initial phase designation. Uncheck this option to stop the Phase Swap at any features of a different phase.

